

Research

Seena Narayanan Karimbunkara,
Priyadarshan Dharma Rajan

Story & Script

Rebekah S.J.

Pencils & Inks

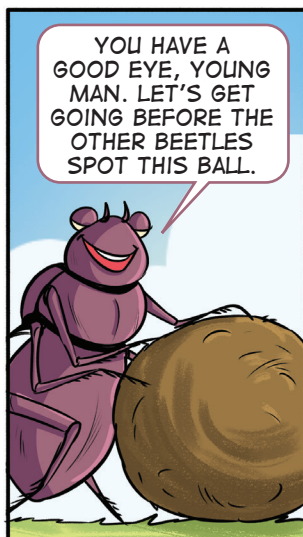
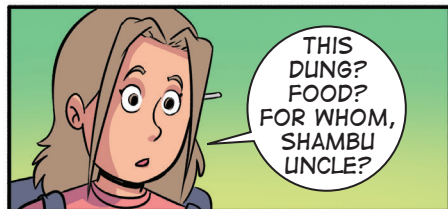
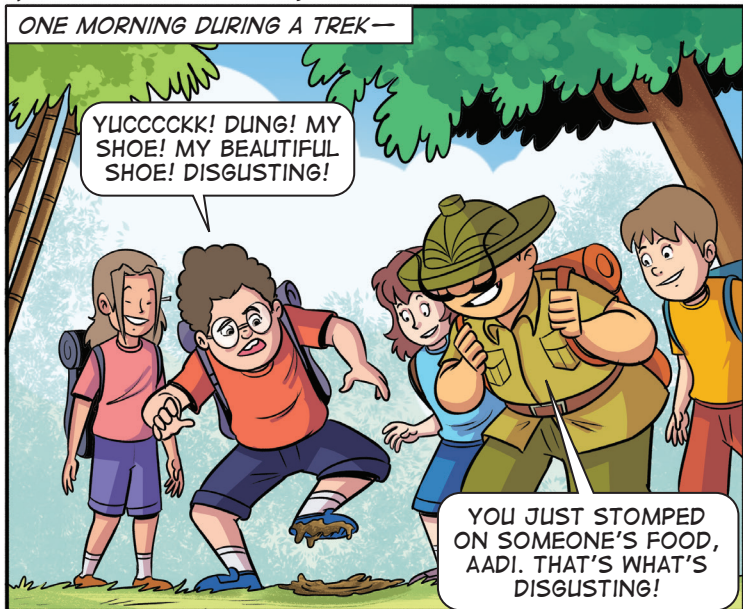
Vineet Nair

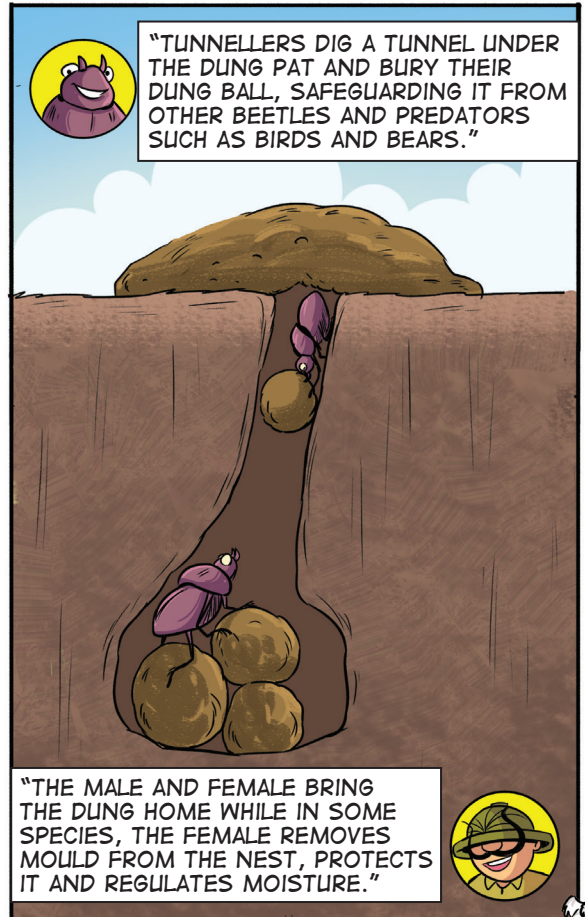
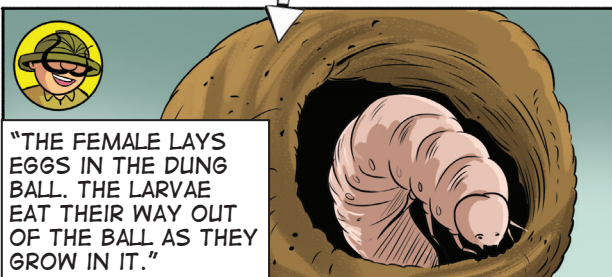
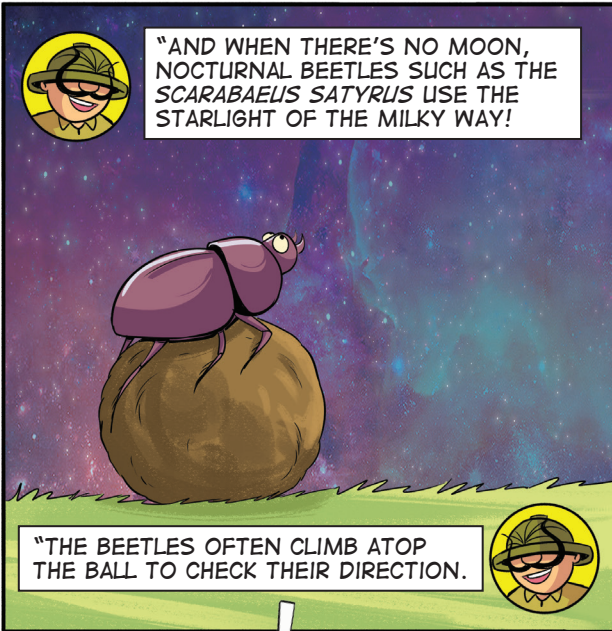
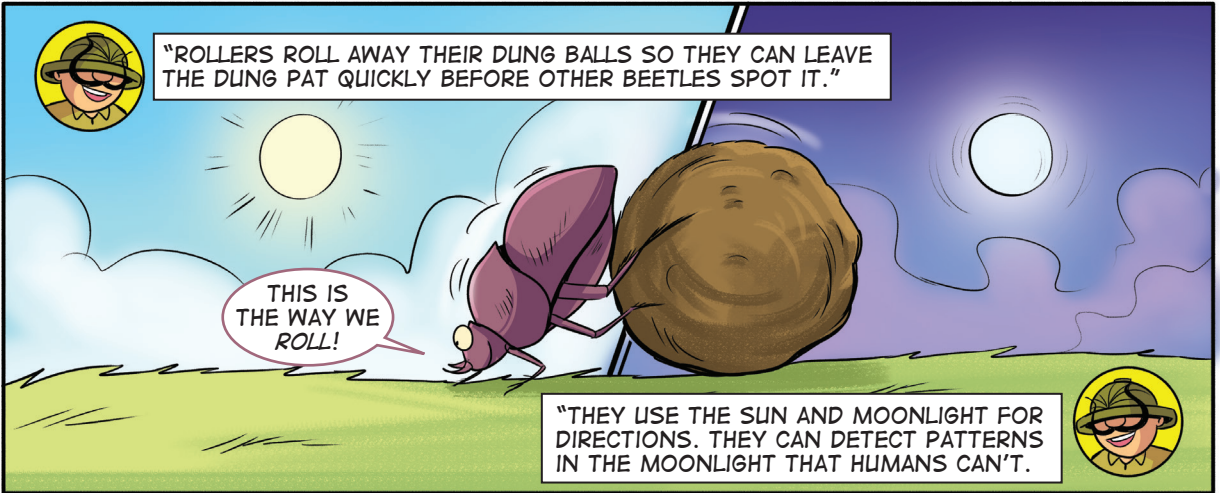
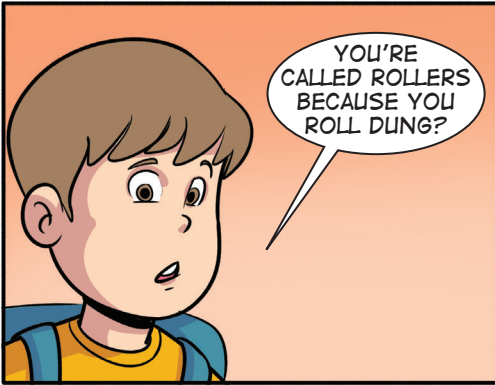
Colours

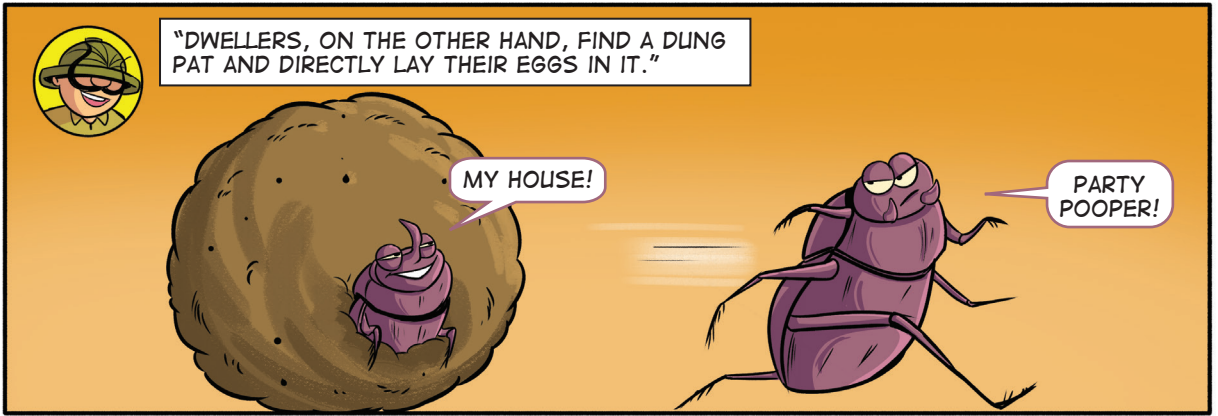
Sachin Adhare

Letters

Pranay Bendre







"DWELLERS, ON THE OTHER HAND, FIND A DUNG PAT AND DIRECTLY LAY THEIR EGGS IN IT."

MY HOUSE!

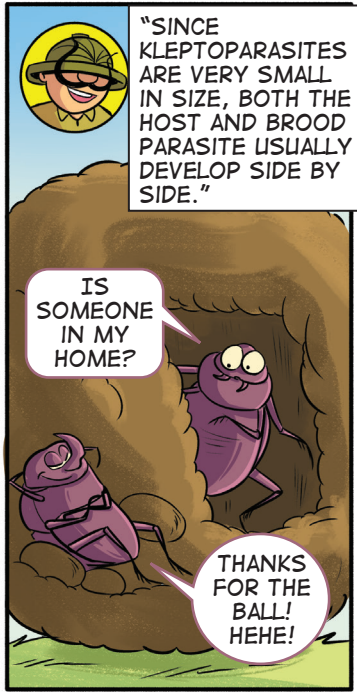
PARTY POOPER!



"KLEPTOPARASITES STEAL ANOTHER BEETLE'S DUNG BALL."

FINDERS KEEPERS! HUEHUE!

"SMALL DUNG BEETLE SPECIES LIKE *CLEPTOCACCOBILIS* SP. FOLLOW THE ROLLERS AND LAY THEIR EGGS IN THE DUNG BALLS."



"SINCE KLEPTOPARASITES ARE VERY SMALL IN SIZE, BOTH THE HOST AND BROOD PARASITE USUALLY DEVELOP SIDE BY SIDE."

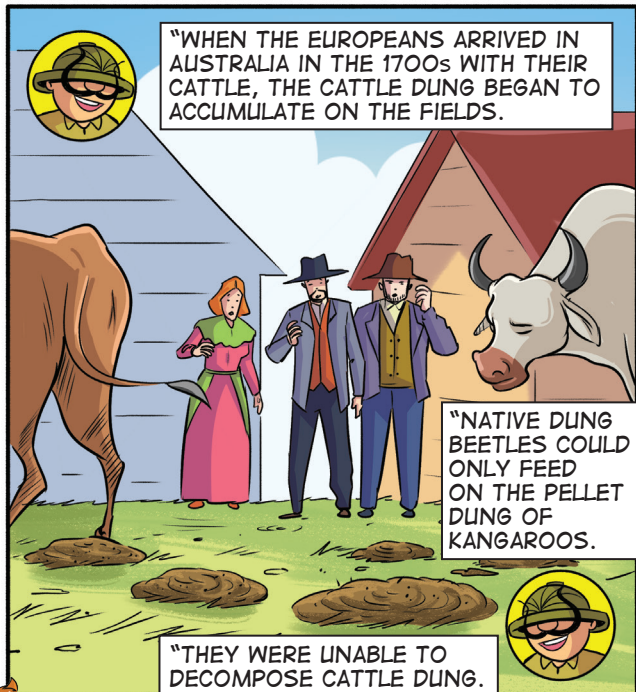
IS SOMEONE IN MY HOME?

THANKS FOR THE BALL! HEHE!



OH, THAT'S UNFAIR! ALL THAT WORK GONE TO WASTE.

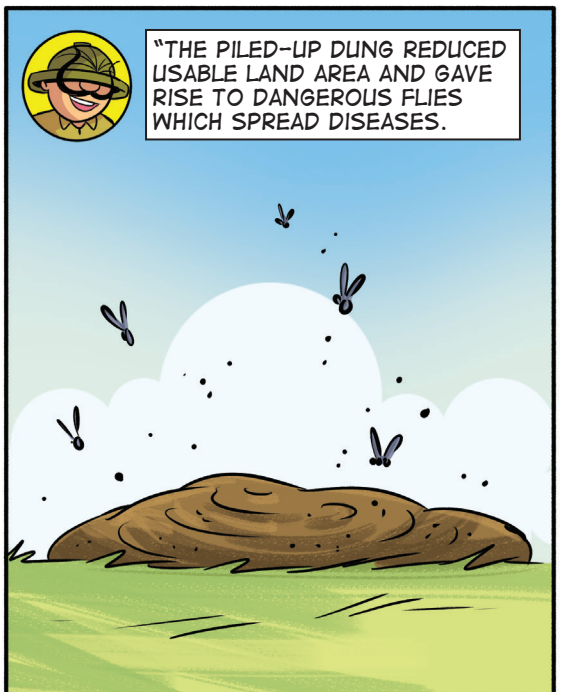
YES, NADIA, THEY REALLY DO A LOT OF WORK. NONE OF US WANT TO LIVE ON A POOPY PLANET!



"WHEN THE EUROPEANS ARRIVED IN AUSTRALIA IN THE 1700s WITH THEIR CATTLE, THE CATTLE DUNG BEGAN TO ACCUMULATE ON THE FIELDS."

"NATIVE DUNG BEETLES COULD ONLY FEED ON THE PELLET DUNG OF KANGAROOS."

"THEY WERE UNABLE TO DECOMPOSE CATTLE DUNG."



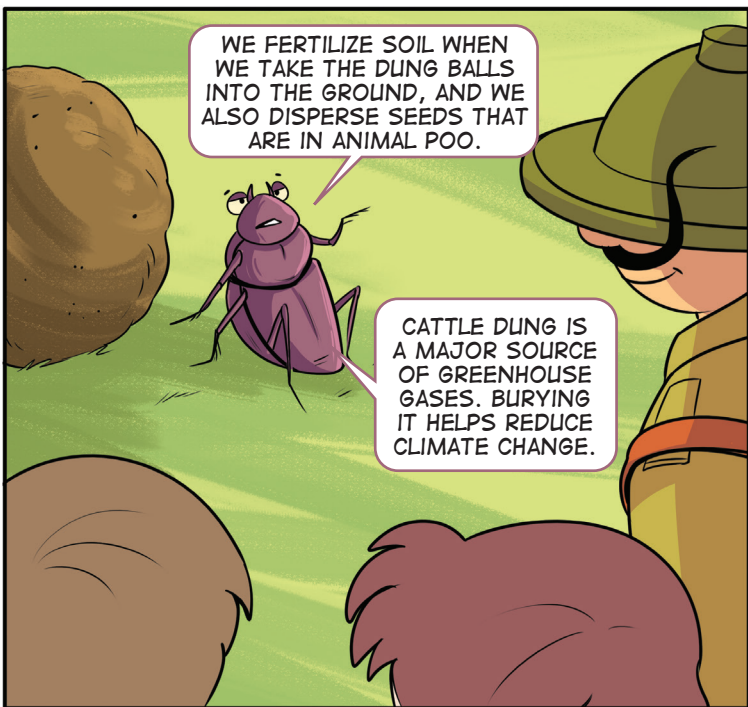
"THE PILED-UP DUNG REDUCED USABLE LAND AREA AND GAVE RISE TO DANGEROUS FLIES WHICH SPREAD DISEASES."



"SO, 55 DUNG BEETLE SPECIES WERE IMPORTED FROM HAWAII, AFRICA AND SOUTHERN EUROPE TO BREAK DOWN THE DUNG."

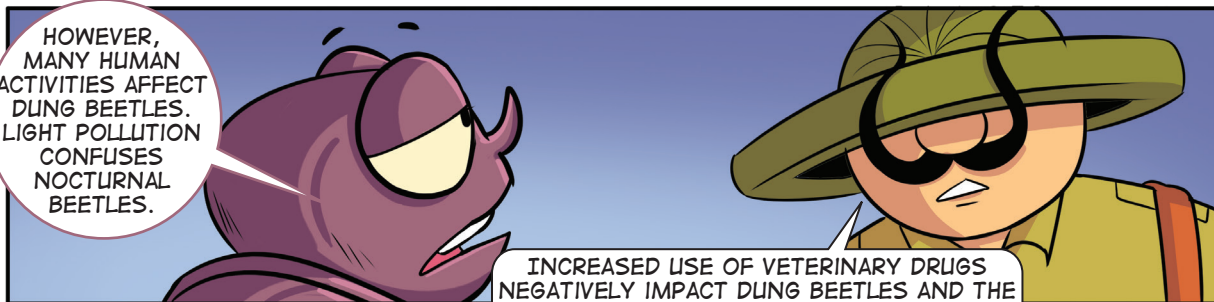
MAKE WAY FOR THE HEROES!

"DUNG CLEARING REDUCES POPULATION OF PESTS."



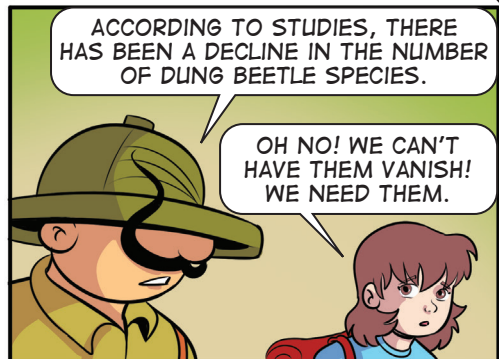
WE FERTILIZE SOIL WHEN WE TAKE THE DUNG BALLS INTO THE GROUND, AND WE ALSO DISPERSE SEEDS THAT ARE IN ANIMAL POO.

CATTLE DUNG IS A MAJOR SOURCE OF GREENHOUSE GASES. BURYING IT HELPS REDUCE CLIMATE CHANGE.



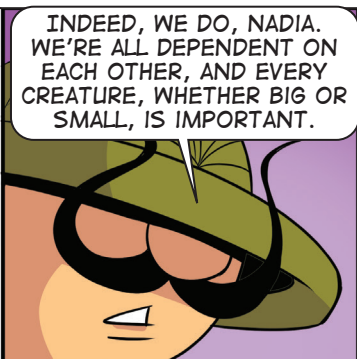
HOWEVER, MANY HUMAN ACTIVITIES AFFECT DUNG BEETLES. LIGHT POLLUTION CONFUSES NOCTURNAL BEETLES.

INCREASED USE OF VETERINARY DRUGS NEGATIVELY IMPACT DUNG BEETLES AND THE CREATURES THAT FEED ON THE BEETLES.

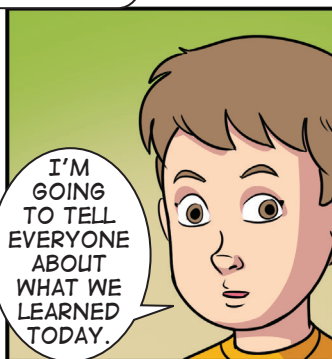


ACCORDING TO STUDIES, THERE HAS BEEN A DECLINE IN THE NUMBER OF DUNG BEETLE SPECIES.

OH NO! WE CAN'T HAVE THEM VANISH! WE NEED THEM.



INDEED, WE DO, NADIA. WE'RE ALL DEPENDENT ON EACH OTHER, AND EVERY CREATURE, WHETHER BIG OR SMALL, IS IMPORTANT.



I'M GOING TO TELL EVERYONE ABOUT WHAT WE LEARNED TODAY.



THAT'S ALL WELL AND GOOD, BUT CAN SOMEONE HELP ME REMOVE THIS POO FROM MY SHOE?

NOT MY POOBLEM!

HAHAHA!